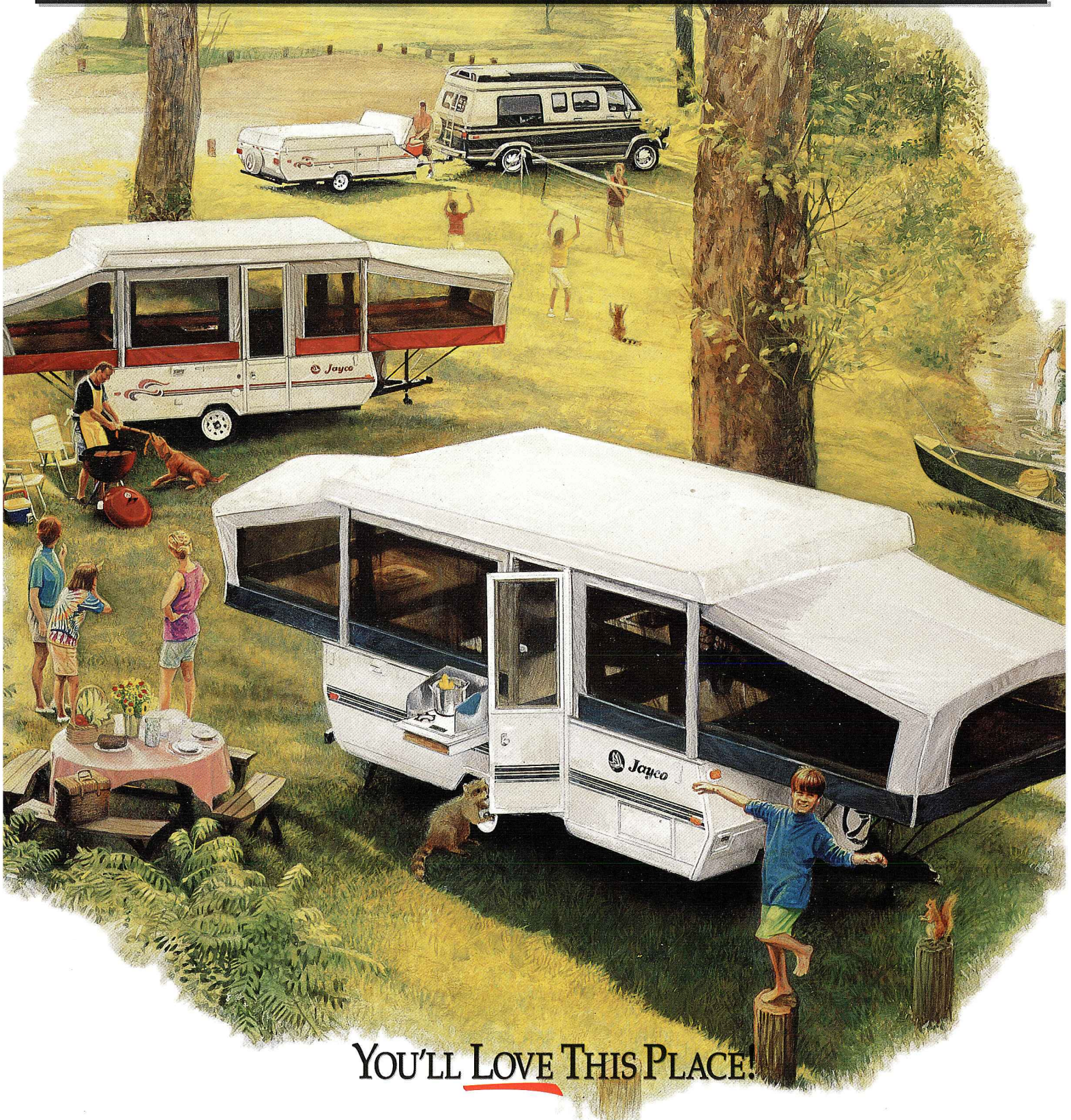


JAYCO FOLD-DOWNS

Founded in 1968

1996 Edition



YOU'LL LOVE THIS PLACE!

EAGLE SERIES™ - CAREFREE CAMPING; CAREFREE PRICE!

Now, more than ever, your family has a comfortable, practical, incredibly *economical* way to live it up in the Great Outdoors! Say hello to our 1996 Eagle Series fold-down camping trailers!

We loaded them with all the essentials for a fabulous, fun-filled vacation getaway. We made sure they contained the best of Jayco's engineering and construction innovations. Then we added a few surprises!

How, you might ask, could we do all this and still keep the price low? Well, let's just say that, after more than 27 years of manufacturing experience, we've learned a thing or two about cutting costs without cutting corners. We're confident you'll be pleased with the results.

Consider, first, that every Eagle Series fold-down comes with our unique, patented roof-lifter system.* It works like a dream: so smoothly and effortlessly, you'll have your camp set up for good times in no time!

You can keep the good times coming year after year, too, because our Eagle Series fold-downs are built to last. That's why we offer a *lifetime limited warranty* — on our lifter system; our unique, extra-strong, domed roof; our solid, weather-treated, plywood floors; and our frame.**

Jayco dependability also shows in numerous little details: like our real wood (not plastic or particle board) drawer sides; the galvanized metal wheel wells; the

bumper that's welded on for safety — not simply bolted on; the energy-saving, automatic-cutoff light switch; and the mildew-resistant aluminum ceiling (better than vinyl). It's little details like these that can make a big difference in your vacation pleasure!

And what are some of those surprises we've included?

We call them our "Golden Touches" — because they're the kinds of things most other fold-downs simply don't offer: lots more storage space — with more drawers and cabinet doors for easier access to stowed items; access to the ice box and cabinets when the roof is down — ideal for last-minute packing; greater cargo-capacity, thanks in part to higher-rated tires; a non-sectionalized tent that eliminates zipper hassles, keeps out bugs, and allows more window area; tinted windows for privacy, heat reduction, and protection from the sun's UV rays; reversible cushions with vinyl backs for easy care; and a built-in insulated ice box that self-drains as the ice melts.

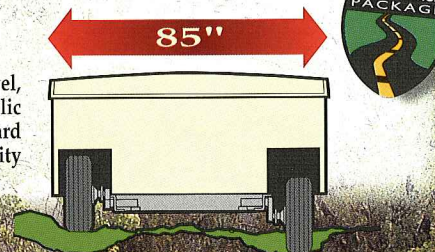
These and many more features are available to you because so many families like yours ask for them. And at Jayco, we *listen*.

What you get, then, is the best of two worlds: the fun and freedom of tent camping — combined with the comfort and convenience of a first-rate RV.



Spacious front trunk on ST Fold-Downs holds lots of camping gear; new aerodynamically-styled trunk lid allows easy access — even when end bunk is set up

Independent torsion-axle suspension makes for smoother travel, no matter how rough the road; high-flotation, heavy-duty tires; hydraulic surge brakes (optional on 8' & 10' models); 85" standard width & wide-track wheel base for greater towing stability



Eagle Series 10



*U.S. Patent No. 3,495,366
**Refer to the Back cover.
And see your dealer for details.

Top: Eagle Series 10:
open & roomy —
with valances that
run completely
around the
edge of the ceiling
for a warmer,
cozier, more
comfortable feel

Bottom:
Eagle Series 10 UD:
features U-shaped
sofa, which Jayco
pioneered; adds
extra seating — and
another full-width,
adult-sized bed;
huge storage
drawer under sofa
seat lets you get at
contents without
having to lift seats;
optional table is
available for
meals and other
activities — has
folding legs and
can be removed for
outdoor use



Eagle Series 10 UD
is a Jayco best-seller; a big hit
with RVers because it offers not
just one but two separate seating areas:
double the comfort in just the right
amount of space

JAY SERIES™ - SETTING THE STANDARD FOR CAMPING TRAILER



Above: an integral part of every Jayco Fold-Down: patented roof-lifter system; no awkward outside arms; easy-turning crank positioned at comfortable height; automatic brake on lifter winch to prevent roof from freefalling; steel bunk-slides with rollers to ease bunk pullout; bungy-cord tent attachment to end bunks; double-hinge entrance door — easy to set up, easy to stow; “double-tuck” tent-to-door attachment to hold tent securely in place



Above right: large-capacity built-in ice box — standard in all Jayco Fold-Downs (instead of the portable cooler some campers provide); has shelves to organize provisions, fiberglass insulation to keep food cold, and is self-draining (optional refrigerator available in select models)

Above left: sturdy wood drawers with brass-look positive-lock catches; drawers — and doors — stay shut during travel

Everything you get in the Eagle Series is yours in the Jay Series — and then some! Because this is the line of fold-downs for people who want more comfort, more convenience, more of a taste of home in their campsite living.

What makes our Jay Series all the more appealing is that its added luxuries don't inflate the price: This is still one amazingly affordable RV!

And just look at what its luxuries include!

First, we've given the interiors a warmer, richer look...with decorator touches like drapery tie-backs, bed skirts, and high-grade fabrics.

We've given our Jay Series cabinets oak-framed

doors and drawers with gleaming, brass-look hardware.

And we've enhanced the tent with elegant teal graphics and striping.

You'll also appreciate the end-bunk privacy drapes; the 24" hideaway clothes-hanger bar; the 14" x 14" roof vent; the automotive-style taillights; and the molded, impact-resistant ABS end caps — along with the radius sidewall skirts, they not only hide the frame but improve aerodynamics.

All this — and much, much more! — ensures that you and your family will have many years of the best vacation camping possible.

The 1996 Jay Series fold-down. We've made it a place you'll love — so you'll love the places you take it even more!



Unique, New Jay Series 1207 DD has two doors — ideal when equipped with optional canopy and screen room on one side, an additional optional canopy on the other

Jay Series 1207

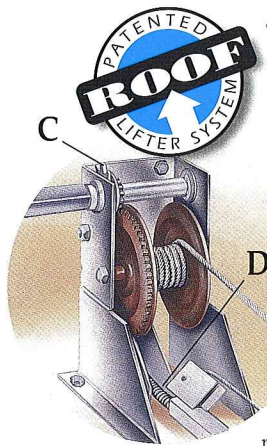


Jay Series
1207 KB —
America's best-
selling fold-
down model —
offers our
popular, spacious
U-shaped sofa
floor plan with a
king-sized bed

Jay Series
1206 KB has a
king-sized bed
for the ultimate
in camping com-
fort; also note the
newly designed
adjustable bed
bows that
increase end-
bunk headroom
and promote
water runoff in
all models



Jay Series 1207:
a real family-pleaser;
features our extra accom-
modating U-dinette and lots
of open area — perfect for
active campers



YOU'LL LOVE OUR STRENGTH...AND OUR CHOICES!

All Jayco Fold-Downs come with Jayco's own, patented roof-lifter system, which is fully enclosed above the floor for protection from the elements: (A) no holes in floor for cable access; bugs & rodents are shut out, (B) smooth-operating crank positioned at comfortable height — lets you raise roof effortlessly, (C) automatic brake on winch helps prevent roof from freefalling, (D) strong, flexible push-rods take the place of troublesome cables and pulleys inside lifter posts; lifter posts are pushed up to raise roof, (E) tubular lifter posts; stronger than C-channel posts

For over 27 years, our family has been building RVs that have earned the trust of families like yours.

Any RV — even one as affordable as an Eagle Series™ or Jay Series™ fold-down — is a big investment, after all. You expect it to provide many years of pleasure. And we see it as our goal to fulfill your expectations.

We build Jayco RVs one at a time, melding Old World craftsmanship with modern engineering techniques and innovative construction ideas — to ensure a product that will last.

In Jayco fold-downs, the results of this process can best be seen in our unique, patented roof-lifter system, our independent torsion-axle suspension, our new Boltaflex

CT™ tent, and in features like these:

(1) a fully laminated and insulated roof, domed to add strength and allow proper water runoff, (2) incredibly durable double-layered outside walls, which consist of a thick sheet of aluminum on the exterior bonded to a heavy-duty plywood backer that protects the aluminum from denting, (3) weather-sealed wood floors and end bunks, (4) a strong C-channel frame with bracing in key areas, (5) bumpers welded to the frame for extra protection, (6) wheel wells of galvanized steel that won't rust or crack, (7) nylon rollers in bunk slides and end walls to help bunks pull out easily, and (8) nylon bushing in the roof-lifter posts for even smoother lifter-system operation and less wear.

FLOOR PLAN CODES:

UD = U-Shaped Dinette	SD = Side Dinette
UDK = U-Shaped Dinette/King Bed	ST = Front Storage Trunk
RD = Rear Door	KB = King Bed
	DD = Double Door
	► = Outside Storage Compartment

1996 FOLD DOWN SPECIFICATIONS

EAGLE SERIES

	TRAVEL LENGTH	CAMP SITE LENGTH	APPROX. TRAVEL HEIGHT	FRESH WATER TANK CAPACITY (GAL.)	APPROX. DRY WEIGHT W/STD. EQUIP. (LBS.)
8	12' 10"	17' 4"	48 1/4"	5	1140
8 SD	12' 10"	17' 4"	48 1/4"	5	1160
8 ST	14' 10"	17' 4"	50 1/4"	5	1415
10	14' 10"	21' 6"	50 1/4"	5	1385
10 UD	14' 10"	21' 6"	50 1/4"	5	1405
10 ST	16' 10"	21' 6"	50 1/4"	5	1570
12 UDK	16' 10"	24'	55"	11	1690

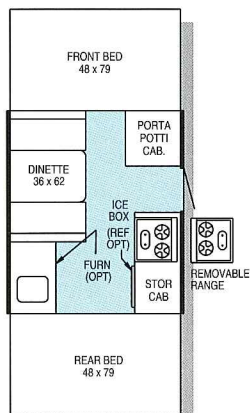
JAY SERIES

1006	14' 10"	21' 6"	52 1/2"	5	1440
1006 ST	16' 10"	21' 6"	53"	5	1605
1006 ST RD	16' 10"	21' 6"	56 3/4"	17	1655
1007	14' 10"	21' 6"	52 1/2"	5	1505
1206	16' 10"	22' 2"	56 3/4"	20	1710
1206 KB	16' 10"	24'	56 3/4"	20	1710
1207	16' 10"	22' 2"	56 3/4"	11	1715
1207 KB	16' 10"	24'	56 3/4"	11	1765
1207 DD	16' 10"	24'	56 3/4"	17	1930
1406	18' 10"	23' 8"	56 3/4"	20	2005

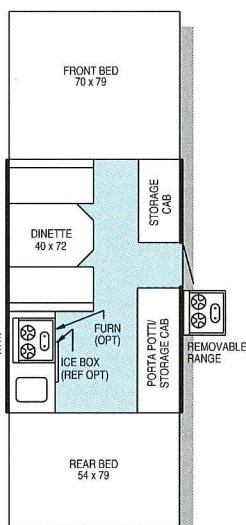
EAGLE SERIES™ FLOOR PLANS



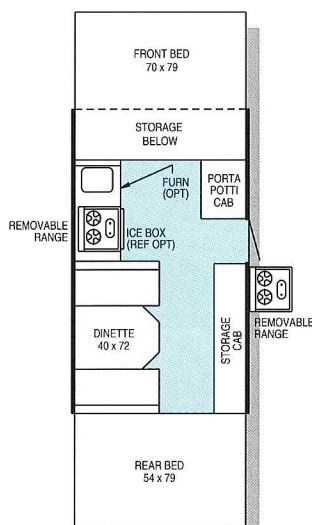
8



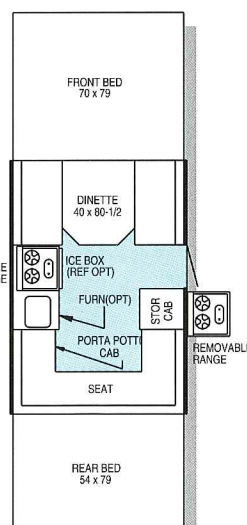
8 SD



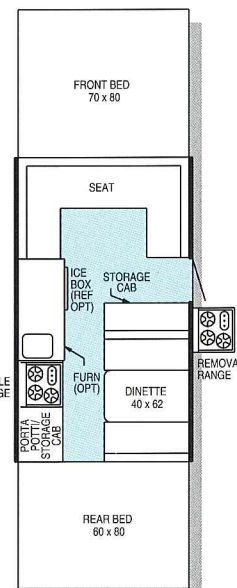
10



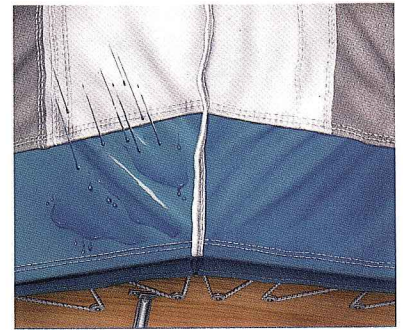
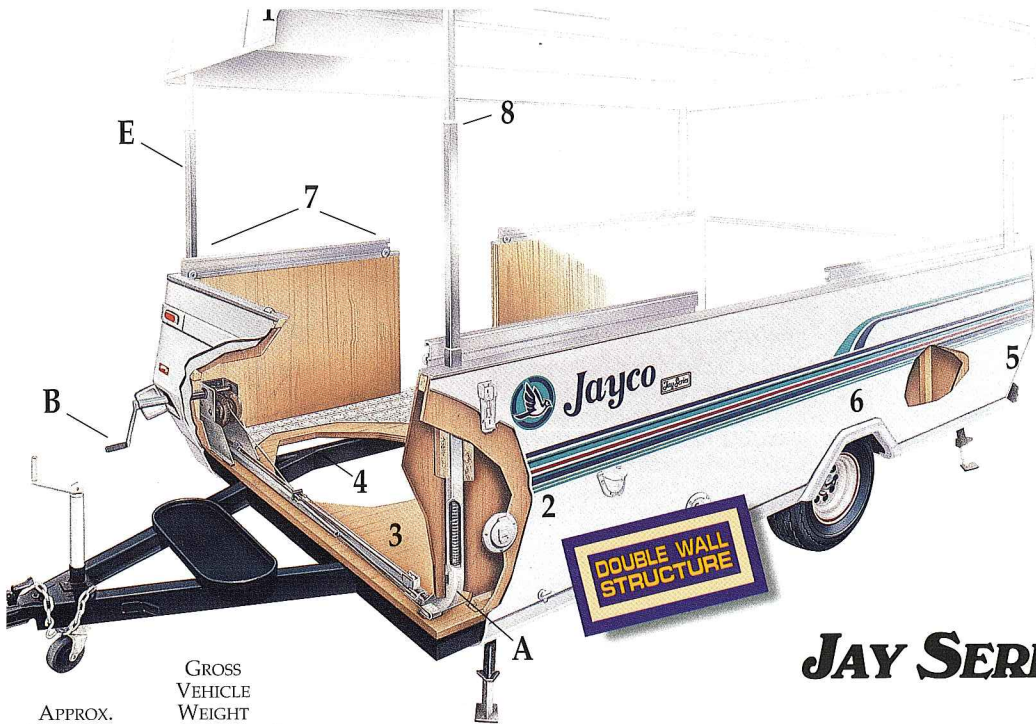
10 ST



10 UD



12 UDK



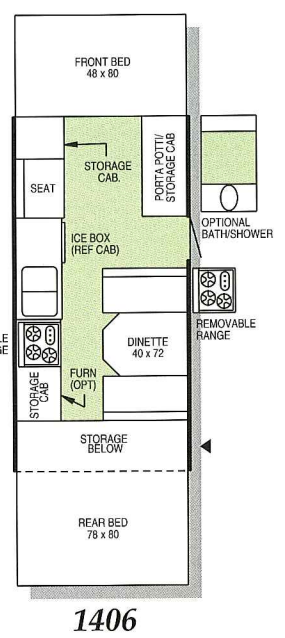
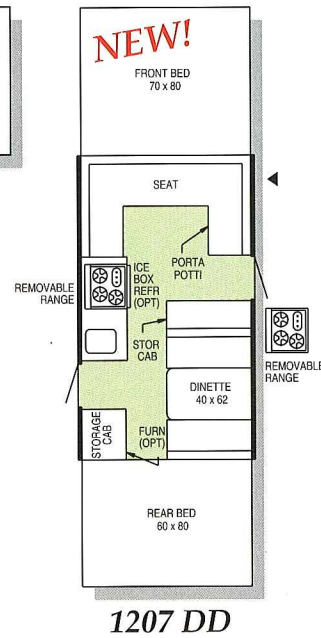
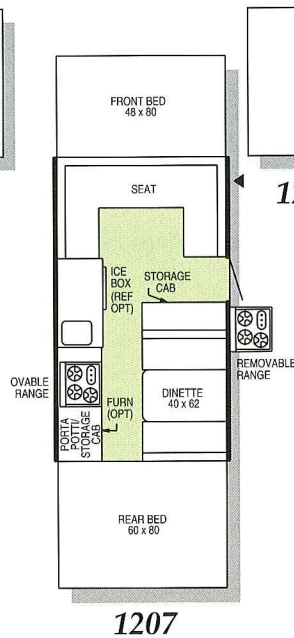
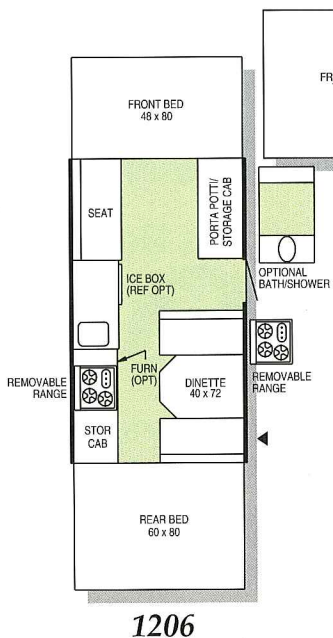
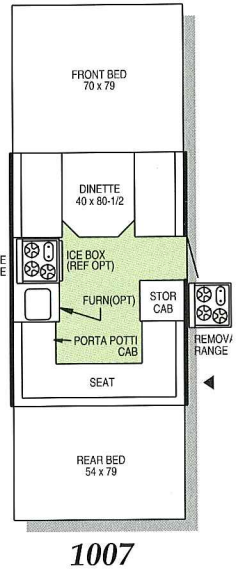
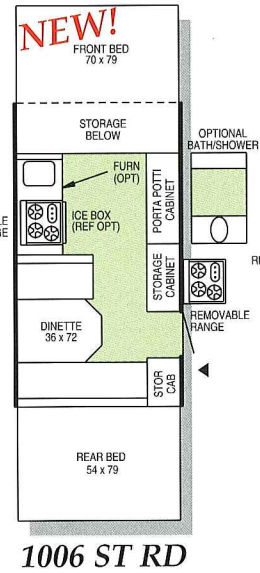
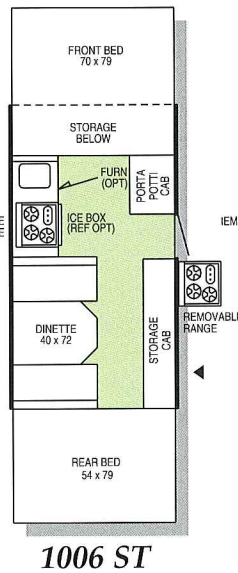
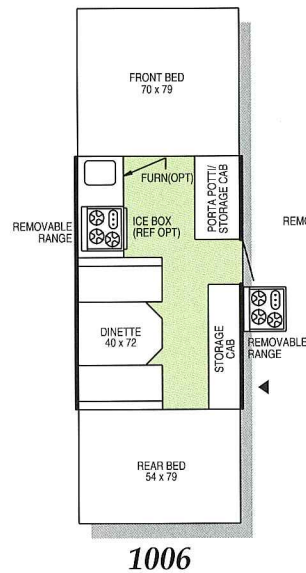
New Boltflex CT™ rugged, heavy-grade tent — a top-quality synthetic with a great canvas look; double-stitched in critical areas for extra durability; fully weather-resistant; retains “like-new” look, year after year

JAY SERIES™ FLOOR PLANS

APPROX. DRY HITCH WEIGHT (LBS.)	GROSS VEHICLE WEIGHT RATING (LBS.)	SLEEPING CAPACITY
---------------------------------------	--	----------------------

140	1940	6
150	1940	6
110	2160	6
170	2205	6
170	2205	7
110	2225	6
195	2465	7

155	2205	6
110	2255	6
115	2380	6
180	2205	7
205	2465	6
220	2465	6
205	2465	7
220	2465	7
220	2685	7
215	3330	6



YOU'LL LOVE THESE FEATURES!



Optional power-driven roof-lifter system; innovative electronic engineering ensures even smoother, easier, more reliable operation; performance-tested under tough conditions; convenient push-button control



Optional outside shower lets you rinse off sand, dirt & dust before you step inside — great for kids! Has separate faucets for hot & cold water; ABS shower head on flexible hose



Optional bathroom with shower, hot & cold faucets, dressing-area curtains, toilet, holding tank, water heater, demand water pump, 20-amp converter, and new hinged lid that makes useful countertop area when bathroom isn't in use



Optional boat rack designed to hold boats of up to 200 Pounds (or choose optional bike rack) — extra-strong domed roof easily supports the load

EAGLE AND JAY SERIES FOLD DOWN STANDARD AND OPTIONAL FEATURES

EXTERIOR FEATURES	EAGLE	JAY
Self-Storing Stabilizer Jacks (1 pair or 2 pair, depending on model)	S	S
High-Flotation C-Range Tires	S*	S*
Patio Light With Bright Lens	S	S
Automatic-Cut-Off Light Switch	S	S
Eleven Clearance Lights	S	S
25' Power Cord	S	S
110-Volt Exterior Receptacle	S	S
Heavy-Duty A-Frame Leveling Jack	S	S
Full-Width Welded-Steel Bumper	S	S
Door Opens When Roof Down for Travel	S	S
Wide-Body Construction	S	S
One-Piece Molded ABS End Caps	N/A	S
Radius Sidewall Skirting	N/A	S
Lockable Outside Storage Compartment	N/A	S
Spare-Tire Mount	O	S
Hydraulic Surge Brakes (Option on 10' Jays)	O	S
Electric Brakes	O*	O*
Self-Storing Step	O	O
Bike or Boat Racks	O	O
Canopies/Screen Rooms/Awnings	O	O

Spare Tire and Cover	O	O
Outside Shower (Requires Deluxe Plumbing)	O*	O*
Power Roof-Lifter System	O	O
GALLEY FEATURES	EAGLE	JAY
Stainless-Steel Sink with Faucet Hold-Down	S	S
Large Capacity, Self-Draining, Insulated Ice Box	S	S
2 or 3 Cu.Ft. 12V/110V/Gas or 110-Volt Refrigerator	O*	O*
White-Enamel Carry-Out Stove (2-or 3-Burner, Depending on Model)	S	S
Carry-Out Dinette Table with Adjustable Leg	S	S
12-Volt Electric System with 110-Volt Converter	S	S
City Water Hook-Up and Country Water Fill	S	S
Deluxe Plumbing Package (includes water heater and demand pump)	O*	O*
16,000-BTU Furnace with Auto-Ignition	O	O
INTERIOR FEATURES	EAGLE	JAY
Fire Extinguisher	S	S
Wall-to-Wall Vinyl Flooring	S	S
Real Wood Drawers with Nylon Guides	S	S

Brass Positive-Catches on Cabinets	S	S
Reversible, 4" Cushions with Easy-Clean Vinyl Backs	S	S
Dinette and End-Bunk Cushions	S	S
Window Curtains and Valances	S	S
Tinted Windows	S	S
12-Volt High-Intensity Lights	S	S
110-Volt Interior Receptacles	S	S
Mildew-Resistant Aluminum Ceiling	S	S
Adjustable-Tension End Bows	S	S
Boltaflex CT™ Water-Repellent Tent Material	S	S
Weather-Resistant Wood Floor	S	S
Bed Skirts	N/A	S
24" Retractable Clothes-Hanger Bar	N/A	S
Framed Oak Cabinet Doors and Drawers	N/A	S
Sliding Screen-Door Panels	N/A	S
14" x 14" Roof Vent	O	S
End-Bunk Curtains	O	S
End-Bunk Light	O	O
Bath/Shower Package	N/A	O*
Overhead Cabinet	N/A	O*
Wardrobe	N/A	O*
* On Certain Models		
S = Standard O = Options N/A = Not Available		

We cordially invite you, as we do all Jayco owners, to join the Jayco Jafari International Travel Club. Ask your dealer about the Jafari chapter, or "flight," as it's called, in your area. Or write Jayco direct.



LIFETIME LIMITED WARRANTY
Jayco, Inc., warrants to the original purchaser of every Jayco fold-down camping trailer that the lifter system, steel frame, floor, and roof are free from substantial defects in materials and workmanship for the lifetime of the fold-down camping trailer. Please refer to the limited warranty available at your Jayco dealership.

LIMITED WARRANTY ON TENT AND OTHER COMPONENTS
Jayco, Inc., warrants to the original purchaser of every Jayco fold-down camping trailer that the tent material is free from functional defects in materials and workmanship for three (3) years from the date of purchase: parts, labor, and freight covered the first year; parts and freight only, the second year; parts only at 50% of retail price, the third year. Other components are warranted for twelve (12) months for parts and labor from the date of purchase. Please refer to the limited warranty available at your Jayco dealership.

PLEASE NOTE
All information in this brochure is the latest available at the time of publication approval. Jayco reserves the right to make changes and to discontinue models without notice or obligation. Pictures in this brochure may show optional equipment. RVs built for sale in Canada may differ to conform to Canadian codes.

For Further Information and Prices, See:

WELCOME HOME



Jayco, Inc.
P.O. Box 460
Middlebury, IN 46540

